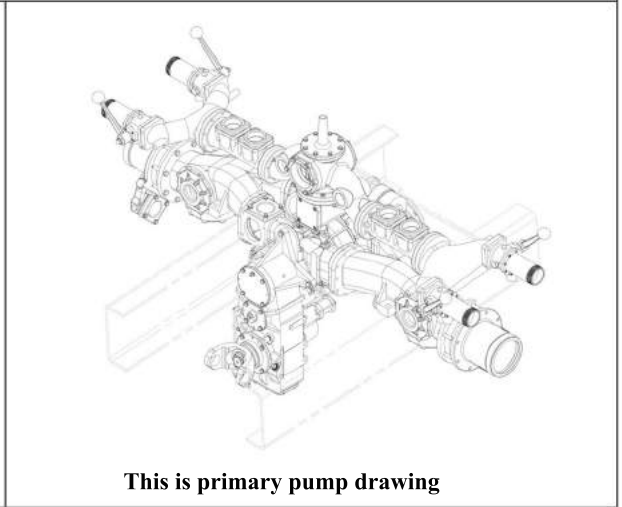
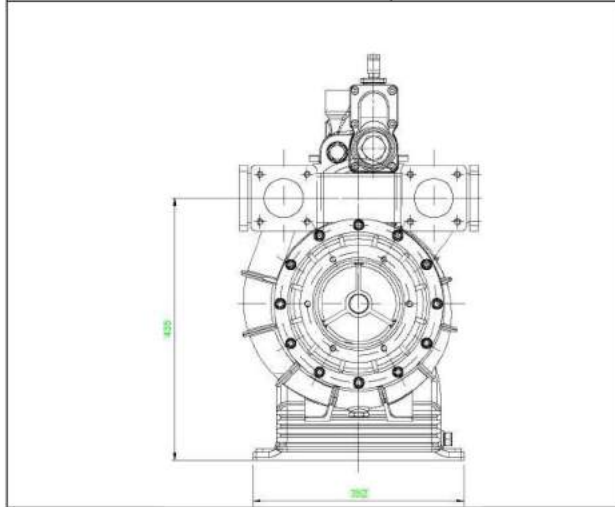




CARROZZERIA
CHINETTI s.r.l
ITALY

OBJET		SUBJECT	
POMPE INCENDIE		FIRE FIGHTING PUMP	
MODELE		MODEL	
C30 M			
DOC.	PI - 015	DATE	10-10-2017

MODELE /MODEL	C30 (LIGHT ALLOY) Midship
----------------------	----------------------------------



This is primary pump drawing

SPECIFICATIONS

Centrifugal type, two stages, multi-pressure
 Output, low pressure: 3000 l/min @ 10 bar nominal condition at suction height 3m
 Required power 100 kW abt. @ 3300 rpm
 Output, high pressure: 400 l/min @ 40 bar nominal condition
 Required power 100 kW abt. @ 3100 rpm
 Automatic priming with liquid ring vacuum pump,
 priming within 30 seconds from 3,0 m suction height
 Pressure relief valve on high pressure stage
 Cleaner at high pressure inlet
 Foam mixer "around the pump" – 1% ,3% and 6%
 Painting: red RAL 3000
 Foam suction from tank or external source

DIMENSIONS & WEIGHT

mm 750 x 600 x 600 height
 Dry weight, 120 kg
 Suction: DN 2 x 125 (5")
 Low pressure outlets 4 x Ø 2"1/2
 High pressure outlet 2 x Ø 25 mm

MATERIALS

Case: light alloy / Impellers: bronze
 Shaft material: stainless steel
 Mechanical shaft seal
 SAE 1410 transmission flange

Componente	POMPE INCENDIE VEHICULAIRE	Issued	Sheet
Item	TRUCK-MOUNTED FIRE-FIGHTING PUMP	10/10/17	1 of 1

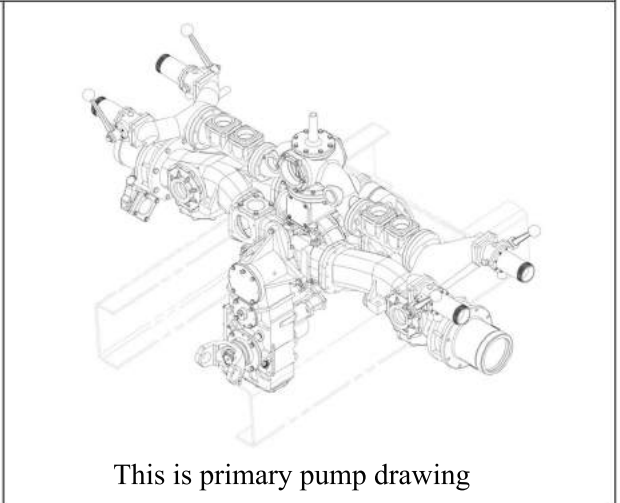
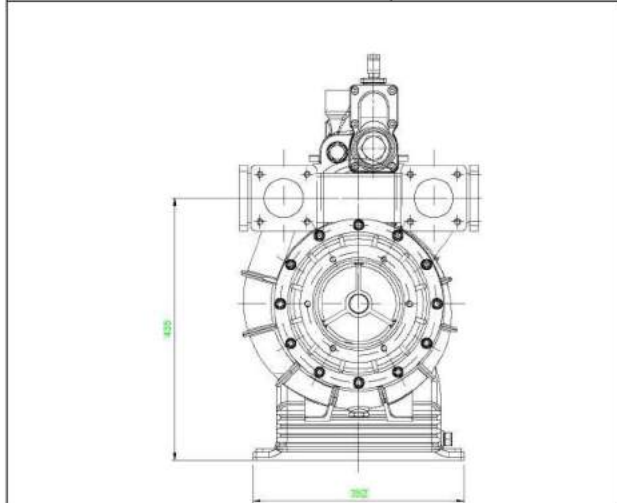
N.B.: For information only. The manufacturer reserves the right to apply any change without any prior notification.



CARROZZERIA
CHINETTI s.r.l
ITALY

OBJET		SUBJECT	
POMPE INCENDIE		FIRE FIGHTING PUMP	
MODELE		MODEL	
C30M			
DOC.	PI - 015	DATE	10-10-2017

MODELE /MODEL	C30 (LIGHT ALLOY) Midship
----------------------	----------------------------------



Pump Protection

Pump is equipped with pressure reduction valve and thermal relief valve

Control Panel

Control panel equipped with:

- Inlet pressure
- Outlet pressure normal and high, PTO engagement switch
- Operations hours
- Pump engagement indicator
- Pump overheat indicator
- Foam tank and water tank level indicator

Componente	POMPE INCENDIE VEHICULAIRE	Issued	Sheet
Item	TRUCK-MOUNTED FIRE-FIGHTING PUMP	10/10/17	1 of 2

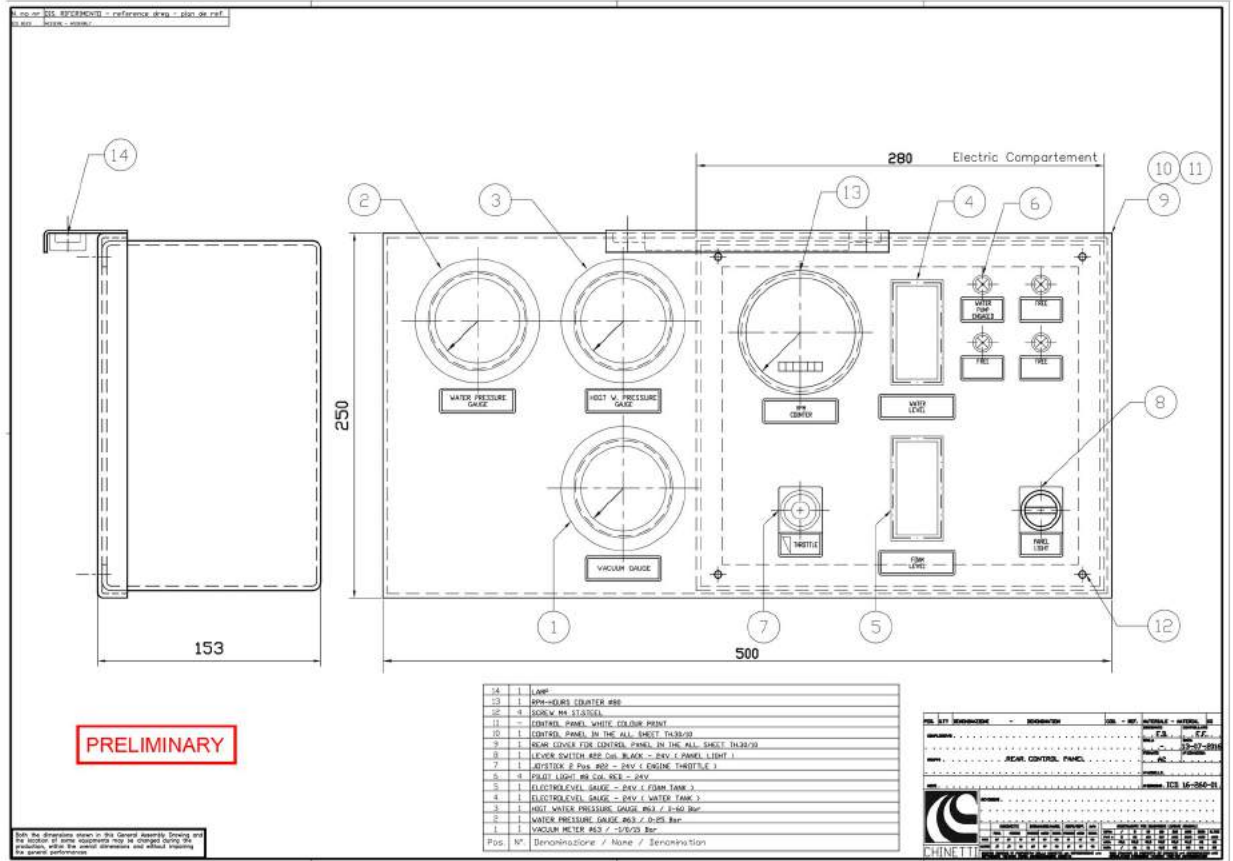
N.B.: For information only. The manufacturer reserves the right to apply any change without any prior notification.



CARROZZERIA
CHINETTI s.r.l.
ITALY

OBJET		SUBJECT	
POMPE INCENDIE		FIRE FIGHTING PUMP	
MODELE		MODEL	
C30M			
DOC.	PI - 015	DATE	10-10-2017

MODELE /MODEL	C30 (LIGHT ALLOY) Midship
----------------------	----------------------------------



Componente	POMPE INCENDIE VEHICULAIRE	Issued	Sheet
Item	TRUCK-MOUNTED FIRE-FIGHTING PUMP	10/10/17	1 of 1

N.B.: For information only. The manufacturer reserves the right to apply any change without any prior notification.



CARROZZERIA
CHINETTI s.r.l
ITALY

OBJET		SUBJECT	
POMPE INCENDIE		FIRE FIGHTING PUMP	
MODELE		MODEL	
C30M			
DOC.	PI - 015	DATE	10-10-2017

MODELE /MODEL	C30 (LIGHT ALLOY) Midship
----------------------	----------------------------------

528
155
493
775
102
423

DISCHARGE TREADED HOSE FOR PUMP BODY
GEARBOX
DRIVE FLANGE
PUMP BODY
FIXING HOLES
MOUNTING HOLES

FLANGED INLET

DELIVERY FLANGED OUTLET

DRIVE FLANGE SAE 1410

CONSTRUCTION

BODY IMPELLER IMPELLER COVERS SHAFT GEARBOX	ALUMINIUM ALUMINIUM BRONZE ALUMINIUM DUPLEX STAINLESS STEEL ALUMINIUM
--	--

REV. 001	DESCRIPTION	DATE	PROJ. / MODEL
	TRUCK MOUNTED FIRE FIGHTING PUMP	10/10/17	PI - 015
	TRUCK MOUNTED FIRE FIGHTING PUMP		10-10-2017

Componente	POMPE INCENDIE VEHICULAIRE	Issued	Sheet
Item	TRUCK-MOUNTED FIRE-FIGHTING PUMP	10/10/17	1 of 1

N.B.: For information only. The manufacturer reserves the right to apply any change without any prior notification.

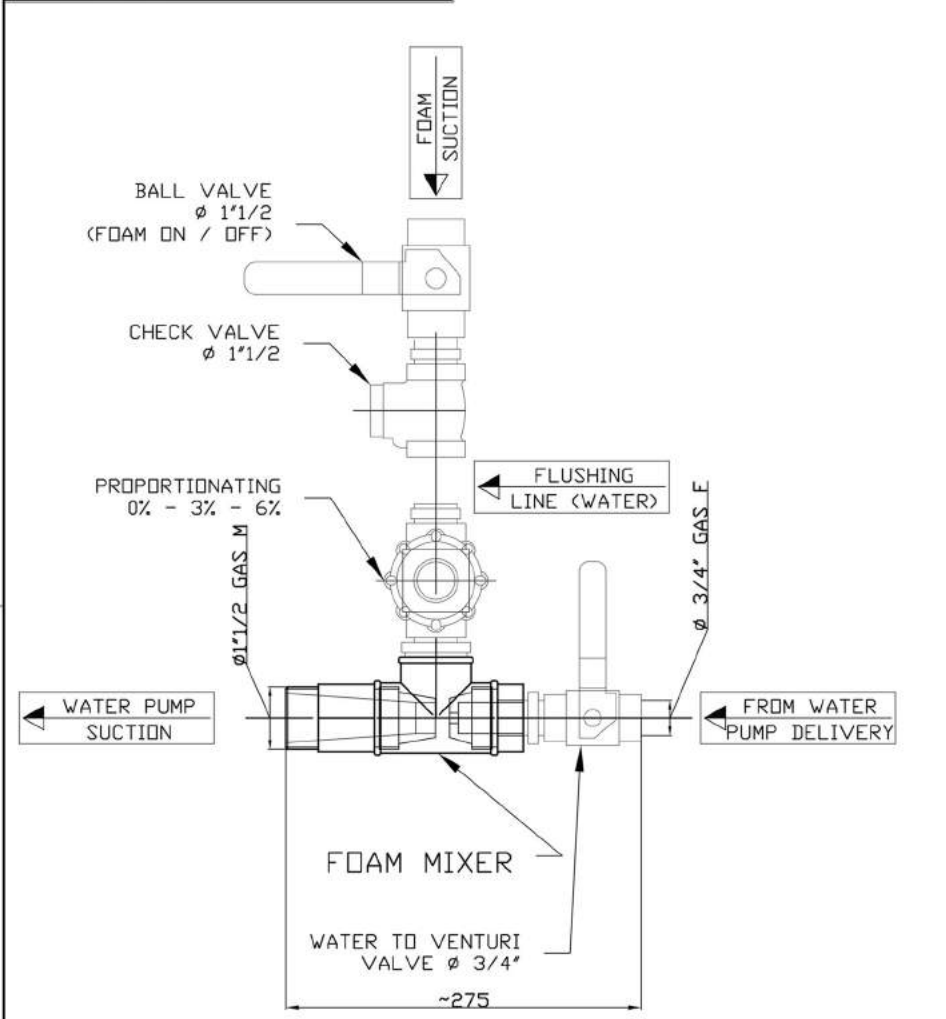


CARROZZERIA
CHINETTI s.r.l
 ITALY

OBJET		SUBJECT	
POMPE INCENDIE		FIRE FIGHTING PUMP	
MODELE		MODEL	
C30M			
DOC.	PI - 015	DATE	10-10-2017

MODELE /MODEL	C30 (LIGHT ALLOY) Midship
----------------------	----------------------------------

Both the dimensions shown in this General Assembly Drawing and the location of some equipments may be changed during the production, within the overall dimensions and without impairing the general performances



POS. ALT.	CONDIZIONE	CONDIZIONE	COD. - REF.	INTERSALE - MATERIAL	ED
COMPLESSIVO	FOAM MIXING SYSTEM AROUND THE PUMP CHINETTI VS 2 - 20			F.P.	F.P.
GRUPPO				SOLA	SOLA
NOTE				FORMA	PR/05/05
				FORMA	FORMA
				PROVVEDI	
				PROVVEDI	1R-222-05-02
				PROVVEDI	1R-222-05-02

Componente	POMPE INCENDIE VEHICULAIRE	Issued	Sheet
Item	TRUCK-MOUNTED FIRE-FIGHTING PUMP	10/10/17	1 of 1

N.B.: For information only. The manufacturer reserves the right to apply any change without any prior notification.